



# Wanguri Preschool

**Wanguri Primary**  
46 Gsell Street,  
Wanguri, NT 0810

 Wanguri Primary

Preschool: 08 8927 1293

School: 08 8927 1655

[wanguri.prim@education.nt.gov.au](mailto:wanguri.prim@education.nt.gov.au)

[www.wanguriprimary.nt.edu.au](http://www.wanguriprimary.nt.edu.au)

Dear Parents and Guardians

Welcome to Wanguri Preschool. We hope you and your child enjoy your time with us. This handbook has been prepared to give you some information about our Preschool. It is a firm commitment of Wanguri Primary School to provide a high quality educational service for young children and their families.

Our program allows students to explore and participate in a play-based learning environment with a broad range of activities targeted to suit the needs and interests of each child. The children engage in learning experiences that focus on the achievement of the Early Years Learning Framework outcomes, with an emphasis on the growth of their communication and language skills and the promotion of their social and emotional development.

Wanguri Preschool offers a full day program. Pre 1 and 2 will attend Monday and Tuesday while Pre 3 and Pre 4 will attend Thursday and Friday. Each group will attend alternate Wednesdays i.e. two days one week and three days the next. Please refer to table below.

Any child turning 4 before 30 June 2023 may commence Preschool at the beginning of Term 1 2023. Children who turn 4 between 1 July 2023 and 30 June 2024 may commence Preschool at the beginning of Term 1 2024.

Please note that it is a Department of Education requirement that parents/guardians provide proof of age and immunisation details on enrolment.

Kind regards

Principal

### Program

The Preschool program has a play based developmental learning focus, based upon the principles of the National Early Years Learning Framework (EYLF),

<b>Preschool Session Times</b>				
<b>Monday</b>	<b>Tuesday</b>	<b>Wednesday</b>	<b>Thursday</b>	<b>Friday</b>
8.20 am – 2.30 pm <b>Pre 1</b> <b>Pre 2</b>	8.20 am – 2.30 pm <b>Pre 1</b> <b>Pre 2</b>	8.20 am – 2.30 pm <b>Odd Week</b> Pre 1 Pre 2		
		8.20 am – 2.30 pm <b>Even Week</b> Pre 3 Pre 4	8.20 am – 2.30 pm <b>Pre 3</b> <b>Pre 4</b>	8.20 am – 2.30 pm <b>Pre 3</b> <b>Pre 4</b>

It is expected that all children arrive and are collected on time



Belonging, Being and Becoming and the NT Preschool Curriculum. This focus recognises that children progress through developmental stages at different rates depending on their interests, background experiences, personalities and general development. Each child is able to engage in the learning process and develop skills and understandings that support their learning and growth across the five learning outcome areas:

- Children have a strong sense of identity.
- Children are connected with and contribute to their world.
- Children have a strong sense of wellbeing.
- Children are confident and involved learners.
- Children are effective communicators.



### Policies and Procedures

Our preschool operates under the guidelines and requirements of the Australian Children's Education & Care Quality Authority (ACECQA) and the National Quality Framework. For more information please visit their website: <http://www.acecqa.gov.au/>.

To ensure that quality education and care is given to all students at Wanguri Preschool, we have a number of policies and procedures that govern our practice. These are regularly being reviewed and updated so please see us if you would like to see an electronic version.

We are also guided by our Philosophy and our Quality Improvement Plan. We welcome your thoughts on both of these documents and will seek your input throughout the year. If you have any concerns or complaints at any time, you are welcome to approach one of the Preschool staff, speak to our Principal, or contact Quality Education and Care NT on 8999 3561.

### Voluntary Parent Contributions

Preschool voluntary parent contributions are a key contributor to ensure quality resources are available to support your child's learning. Voluntary parent contributions of \$50.00 per year are suggested. We encourage these voluntary contributions to be made within the first three weeks of the year.

Payment of Preschool voluntary parent contributions benefits your child and facilitates strong foundations at the beginning of their educational experience.

Voluntary parent contributions can be paid at the Front Office or by Direct Deposit/ Transfer to :-

**BSB: 035-306/Account: 940361. Please ensure Preschool Contributions and Your Name are on the deposit otherwise this cannot be credited to your account.** EFTPOS facility is also available at the Front Office.

### Back to School Voucher

Each year the Australian Government helps parents with a \$150 back to school voucher. This voucher is valid for the Term that your child enrolls into Preschool and can be used to pay for school uniforms, Preschool packs or excursions.

### Absences

If your child is absent from a Preschool session it is important to notify the Preschool as

all absences are recorded in the Department of Education's attendance record system. This can be done via the schools Schoolbag app, emailing [wanguri.prim@education.nt.gov.au](mailto:wanguri.prim@education.nt.gov.au), or phone 89271655.

### Allergy Aware Preschool

At Wanguri Preschool we strive to provide an inclusive and supportive environment for all. Part of this means being an Allergy Aware School and making the community aware, through class letters and communication, when there are students or staff at school who have severe allergies. Your support with keeping all our students safe is appreciated.



### Morning Tea and Lunch

Children will need to bring their own fruit, morning tea and lunch on the days they attend. Please provide your child with a clearly named lunch box and water bottle.

**We have a healthy eating policy so please think of healthy choices when packing lunch boxes i.e. a sandwich, cheese, yoghurt, crackers, a piece of fruit or carrot sticks and water. We encourage sustainability and recycling by asking that packaging be kept to a minimum.**

Birthday cup cakes are welcome, but please check with a staff member beforehand as to how many children you will need to cater for or any student allergies.

### Shoes and Hats

Children are required to wear a wide brim hat outdoors. This is an important part of the Preschool program as we are required to follow the Northern Territory Department of Education, "Sun Safe" policy. ('No hat, No play'). Wide brim hats are available from the front office for \$14.00. We also encourage you to apply sunscreen before your child comes to school. Sunscreen is available on our sign-in tables if required. Please ensure your child wears secure shoes or sandals. Please no Crocs or thongs. Safe, supportive shoes minimise the risk of accidents and injury. It is also helpful if your child wears shoes they are able to put on themselves.

### Clothing

Preschool children are very busy each day painting, pasting, cutting, playing with water, sand etc. Painting smocks/aprons are provided for many activities, but children still regularly spill water, paint, yoghurt etc. on their clothing. For this reason, please ensure your child brings a change of clothes each day in a plastic bag. Uniform shirts are available from the front office at a cost of \$15.00. Please ensure all belongings **are clearly labelled**.

### Swimming Pool

The swimming pool is used at various times through the year. Children need to bring bathers, towel and a waterproof bag. Please ensure that all clothing, underwear, bathers and towel are clearly labelled to help avoid confusion and loss.

### Library

Each week the Preschool children visit the Primary School

Library

to borrow a book. In order to borrow, each child needs to have **their own library bag (please label)**. A library bag is included in the Preschool Pack which is available through the front office.

Loss or damage to books will incur a cost based on the age and type of book. Teaching respect and care of property is one of the aims of our Preschool and your help in keeping library books safe at home is greatly appreciated. Teachers will inform you of your child's library day.

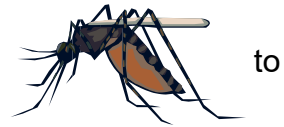
## Recycled Materials

We regularly use recycled materials for our arts and crafts, including washed meat trays, cardboard boxes and cylinders, magazines, cotton reels, wool and material scraps, paper and cardboard off cuts. Donations of these items are appreciated. The Department policy prohibits us from accepting toilet rolls.

## HEALTH

### Mosquitoes

Throughout the year, there are times when plagues of mosquitoes are a cause for concern. Unfortunately, they are an unavoidable hazard and the best method of protection is wear a suitable insect repellent. During these times we ask that you apply a suitable repellent before children come to Preschool and provide a roll-on bottle for your child to use during the day.



to

### Head Lice

Head lice are easily spread among children. For this reason, it is important that children have their own hat. If you find lice in your child's hair please treat immediately and inform Preschool staff. When notified of a case of lice, a standard letter requesting that all parents check their children's hair will be issued.

### Sick Children

If your child is unwell, please keep them at home so that they can recover quickly, and for the welfare of other students and staff. Please remember to notify the school of your child's absence via preferred communication method i.e phone, email, skoolbag app.

### Parent Helpers

Parents are always welcome in the Preschool (subject to public health guidelines). Please let us know if you would like to assist in any way or if you have a special skill or interest you would like to share.



# Wanguri Preschool - Philosophy -

We are committed to understanding and connecting with each child and developing meaningful relationships with them.

At Wanguri Preschool we believe:

Children learn best through play



In providing a safe, stimulating, engaging environment



In building strong collaborative relationships with our families and our community



In celebrating children's achievements



Our preschool is a place for children, families and educators to learn and grow



Families are the first educators of their own children

Every child has a voice and the right to be heard



Children learn best when they are happy, healthy and have the confidence to have a go



In being inclusive and catering for diversity, and in recognising the social and cultural needs of all families



In fostering a connection with the natural environment and in encouraging sustainable practices

